

Company Profile

Since its establishment, SonoScape has been committed to providing high quality medical equipment for the healthcare sector. SonoScape specializes in the development and production of diagnostic ultrasound solutions. By introducing advanced imaging techniques, SonoScape has improved diagnostic accuracy and therefore enabled better health outcomes. Since 2002, SonoScape has reached and benefited millions of people. With the world in mind, SonoScape will continue providing more effective and accessible healthcare solutions, through persistent innovation and passion for life.

Quote from the Analyst of

"The Frost & Sullivan Award for Growth Leadership is presented to the company that has demonstrated excellence in capturing the highest annual compound growth rate for the last 3 years...The sales of ultrasound devices contribute an overwhelming proportion of total revenue, helping the company strengthen its leading position to outperform the competitors in the marketplace. With increasing penetration of mid-to high-end ultrasound devices, SonoScape is expected to see significant growth potential in the future..."

Company Milestone

2002: Company Founded in Shenzhen, China
2003: Released SSI-1000: the 1st 15" Portable Color Doppler system in China
2004: Released SSI-2000: the 1st PC platform Color Doppler system in China
2005: Received the "High Technology Company" award from the PRC government
2007: Received "CHINA TOP BRAND" award in the Medical Equipment Industry
2007: Released the 1st Real time 4D ultrasound system in China
2008: Received "European Entrepreneurial Company 2008" award from FROST & SULLIVAN
2008: Received "Flagship Company" award in the Medical Equipment Industry in China
2009: Received "Product Quality Leadership Award 2009" from FROST & SULLIVAN
2011: Received the Reddot 2011 Product Design Award for S20 in Essen, Germany
2013: Received "Ultrasound Market Growth Leadership Award, 2013" from FROST & SULLIVAN
2014: Received the iF product design award 2014 for S9 in Munich, Germany



SonoScape

Yizhe Building, Yuquan Road, Shenzhen, 518051, China

Tel: 86-755-26722890 Fax: 86-755-26722850

E-mail: market@sonoscape.net www.sonoscape.com

Xcelsitas
Smart Medical Technologies

Authorized Reseller Leipziger Platz 8, 10117 Berlin

Tel: 49-555789950 Fax: 49-30-555789951

E-mail: info@xcelsitas.com www.xcelsitas.com

SonoScape

S6

The Best Value in
Portable Ultrasound



Caring for Life through Innovation

The Best Value Portable Ultrasound



S6 is a multifunction hand carried Color Doppler ultrasound system that can be widely used in clinical practice. SonoScape has developed this system to satisfy the most clinical requirements as Radiology, Cardiology, OB/GYN, Vascular and Small parts. With the help of powerful software packages, professional transducers, built-in battery and other user-friendly designs, S6 makes it possible for doctors to serve patients anywhere and anytime without compromise.



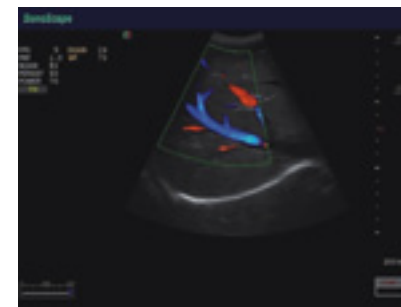
Premium Features

- 15 inch LCD monitor
- CFM, DPI, PW, HPRF, CW
- One button image optimization: M-tuning
- Tissue Harmonic Imaging, Compound Imaging
- Trapezoidal Imaging and standard Freehand 3D Imaging
- Intuitive interface and user-friendly control panel
- Lightweight, built-in Li-ion battery supports continuous scanning for more than one hour without power supply

Abundant Communication Interfaces



- 2 universal sockets for quick switch during scanning
- Optional socket extender, S6 connects with 3 transducers at the same time
- 2 USB 2.0 ports and DICOM 3.0 port
- S-video and VGA ports
- USB based software upgrade



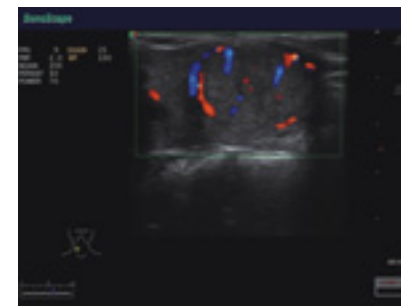
Hepatic Vein



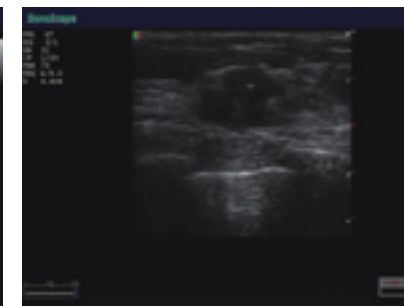
Power Doppler



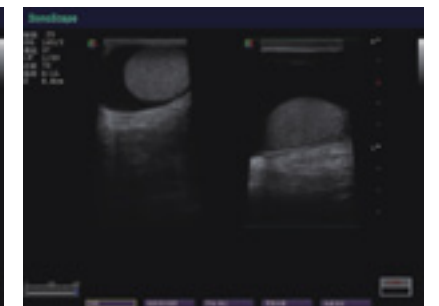
Kidney



Thyroid Tumor



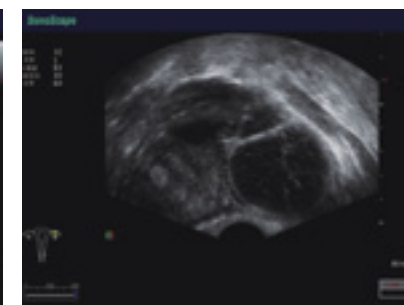
Breast Carcinoma



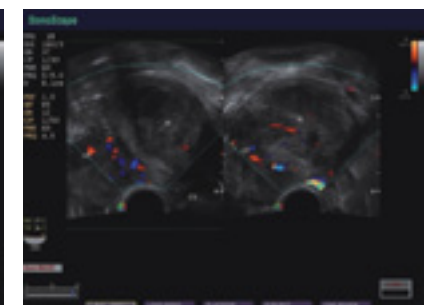
Hydrocele Testis



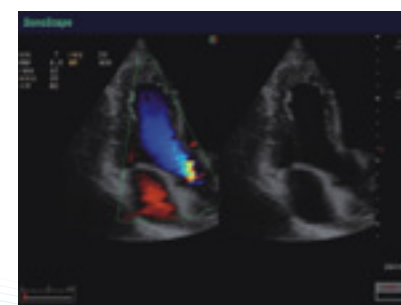
Fetal AO Arch



Uterus Cyst



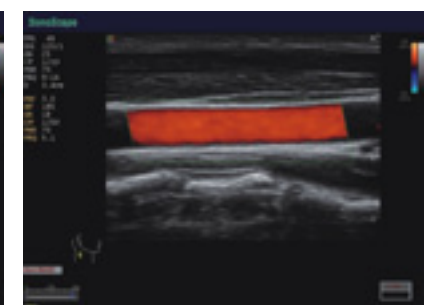
Hysteroscopic



LVOT Flow



MV Flow



Common Carotid Artery

Application

Radiology:

- Shared services: 2B, 4B, CFM, DPI and PW, Panoramic imaging
- Wide range of transducer: high density linear and convex, L-shape surgical probe
- Image quality: supreme 2D, and penetration high Doppler sensitivity, 32.9 cm high penetration

OB/GYN:

- Freehand 3D imaging; Optional 4D imaging
- 200 degrees wide range trans-vaginal transducer with temperature-detection
- Professional and abundant OB/GYN measurement software

Cardiovascular:

- Shared services: color M, CFM, PW, CW, Stear M-mode, TDI
- Wide range of transducer: high frequency linear, high and low frequency phased array and micro-convex array
- Professional and abundant cardiovascular measurement software

Urology:

- Trans-rectal transducers: EC 9-5
- Biplane transducers: BCC9-5 and BCL10-5
- Professional urological measurement software

Emerging Application:

- Support Emergency, ICU/CCU, Anesthesia applications
- Trapezoidal imaging technology and Panoramic imaging
- Hockey transducer
- High frequency linear transducer, up to 15MHZ
- Friendly ergonomic designs and ease of use
- Built-in Li-ion battery
- Biopsy guide

Other Application:

- MSK/Sports medicine, Breast, Angiology and Vascular, etc.

A Wide Range of Clinical Applications

